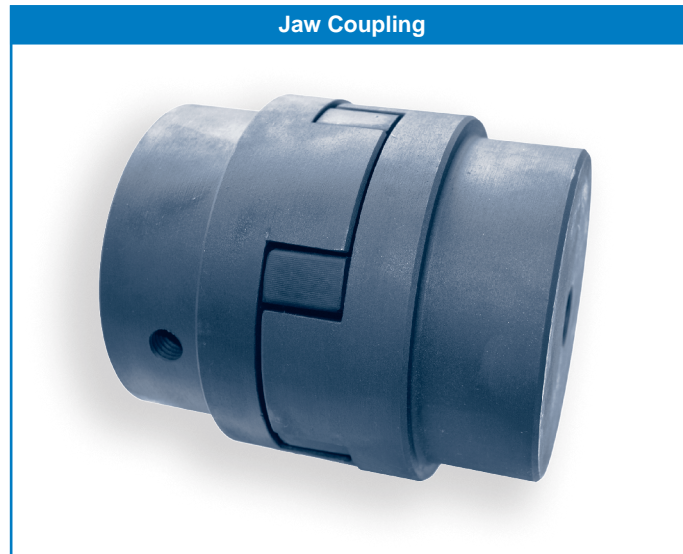


Jaw Couplings

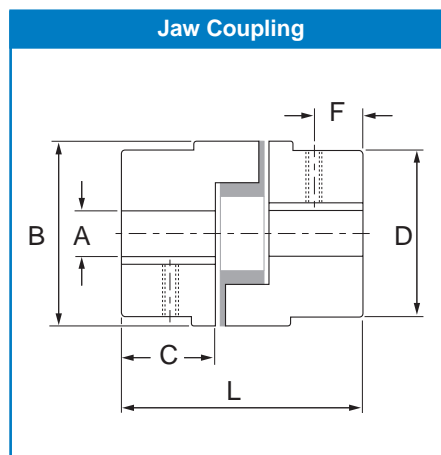


Jaw Coupling Data

Coupling Size	Nominal Torque Nm	Maximum Speed rev/min	Pilot Bore A	Maximum Bore A	Overall Diameter B	Assembled Length L	Hub Width C	Hub Diameter D	Set Screw Position F	Set Screw Size	Complete Weight kg
035	0.50	31000	4.8	8	16.0	20	7	16.0	3.0	M3	0.06
050	3.51	18000	6	14	27.5	44	16	27.5	6.5	M6	0.10
070	5.77	14000	9	19	35.0	51	19	35.0	9.5	M6	0.25
075	11.9	11000	9	24	44.5	54	21	44.5	8.0	M6	0.45
090	19.2	9000	9	24	54.0	54	21	54.0	8.7	M6	0.55
095	25.8	9000	9	28	54.0	64	25	54.0	11.5	M8	0.65
100	55.4	7000	12	35	65.0	89	35	65.0	12.5	M8	1.60
110	105	5000	15	42	84.0	108	43	84.0	20.5	M10	3.00
150	150	4000	15	48	96.0	115	45	96.0	22.5	M10	4.90
190	200	3600	19	55	115.0	133	54	102.0	22.5	M12	7.00
225	280	3600	19	60	127.0	153	64	108.0	25.5	M12	9.00

Angular misalignment capacity up to 1°
 Parallel misalignment capacity up to 0.38mm

Weight is for a complete coupling with a pilot bore
 Nitrile insert temperature range -40 °C to 100 °C



All dimensions in millimetres unless otherwise stated. Every effort has been taken to ensure that the data listed in this catalogue is correct. Challenge accepts no liability for any inaccuracies or damage caused.